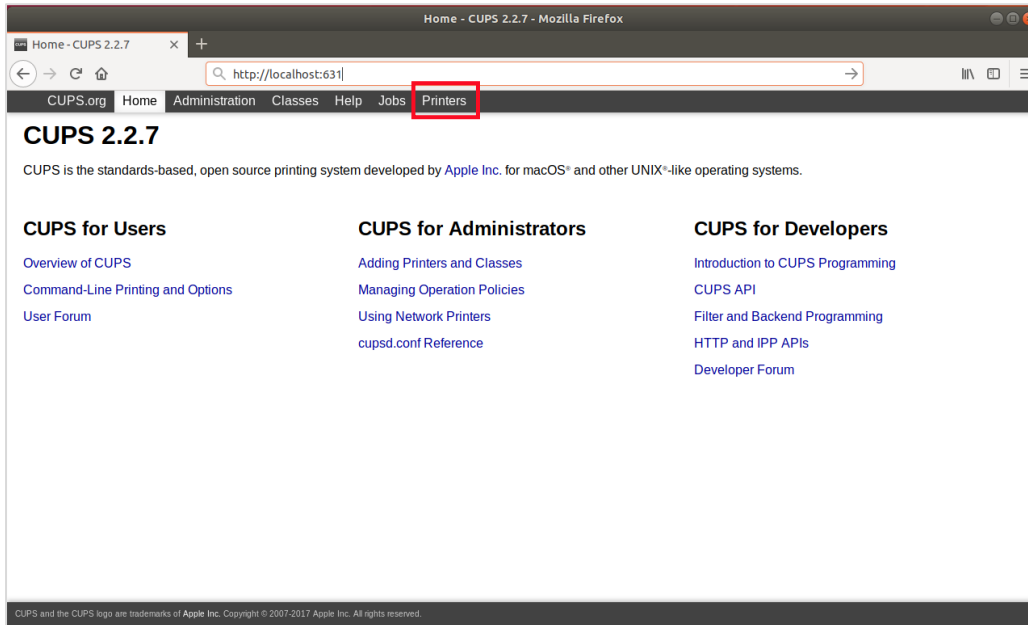


Linux Driver Job Handling setting manual

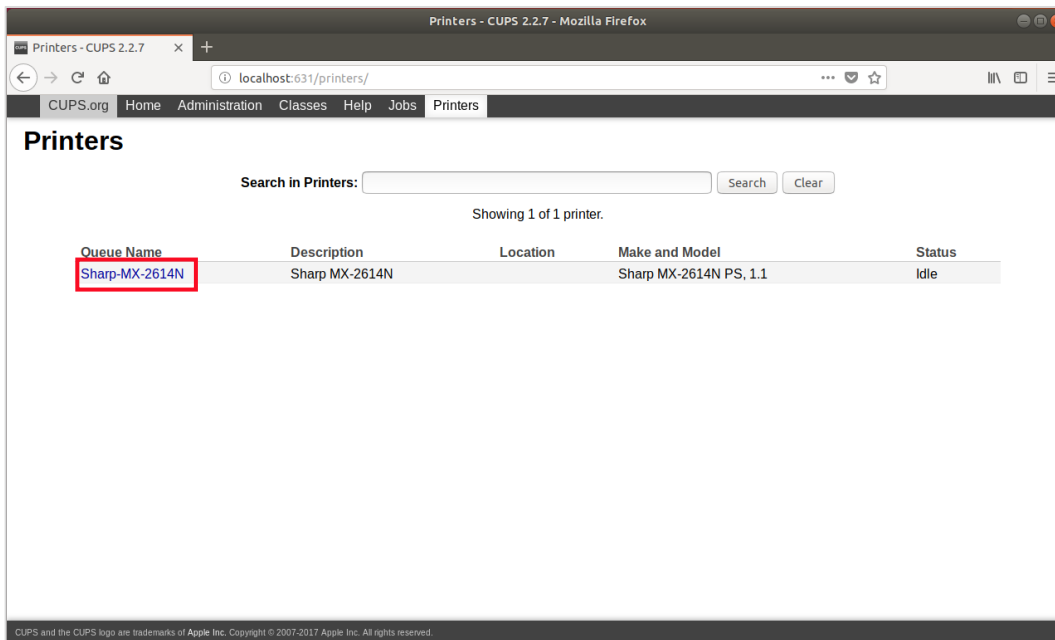
(The workaround when the settings do not work on the "Properties" in application side)

1. Access "http://localhost:631/" with Firefox
CUPS settings will open.

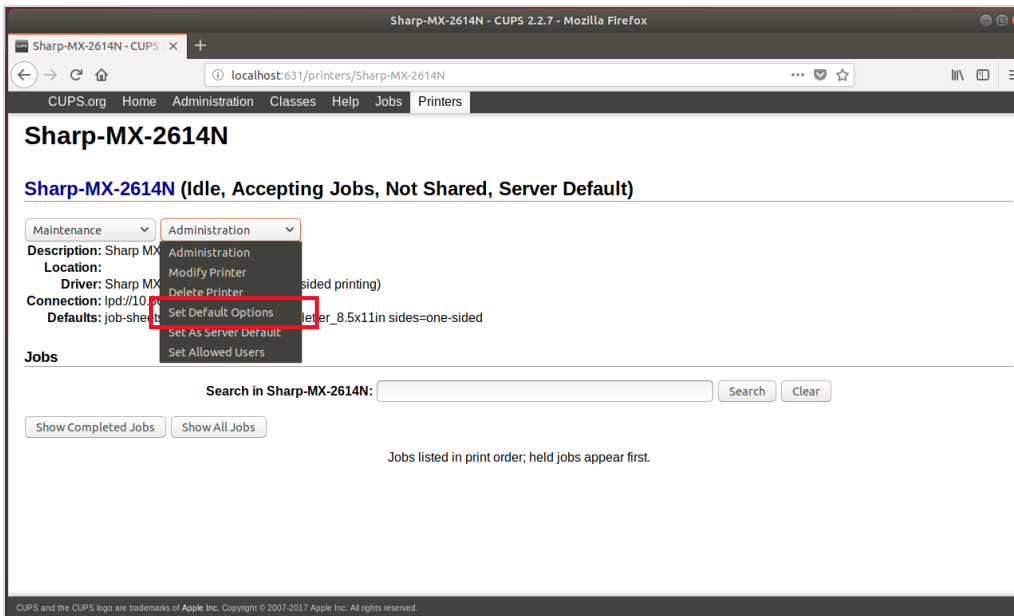
2. Click "Printers" on CUPS Home screen



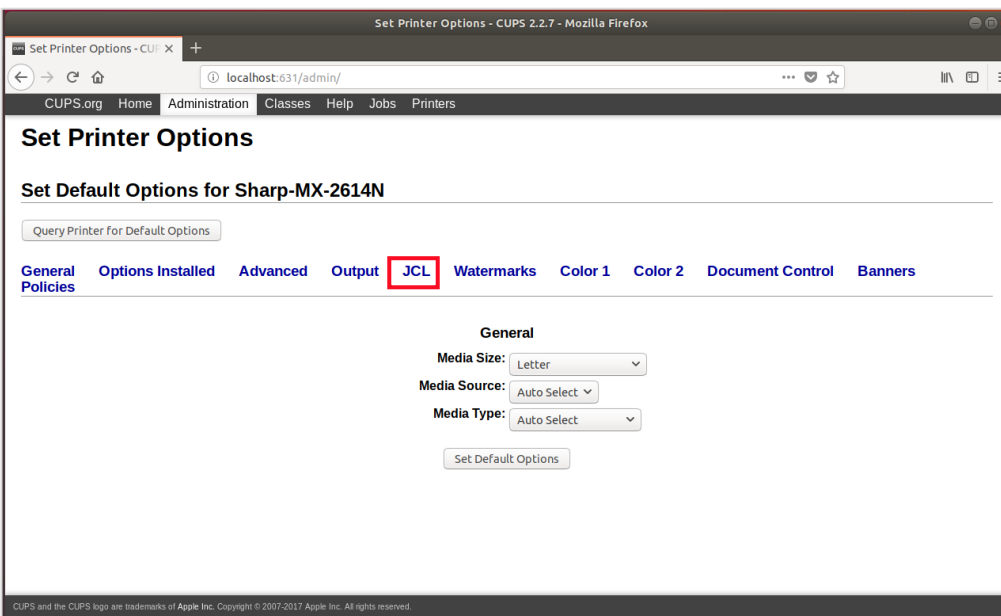
3. Click an installed printer



4. Select "Set Default Options" from the right one of the drop-down menus

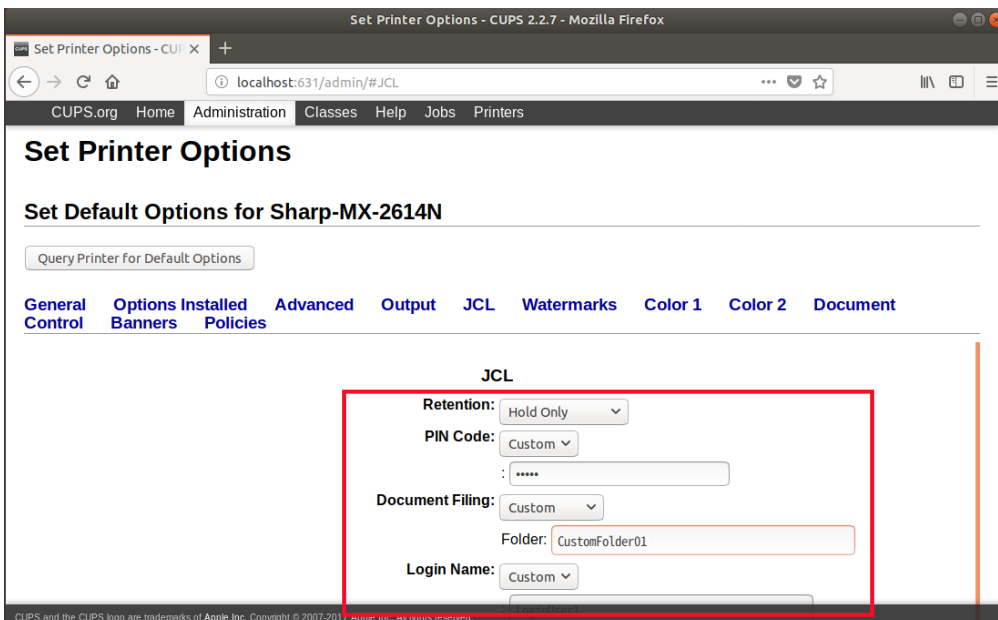


5. Click "JCL"

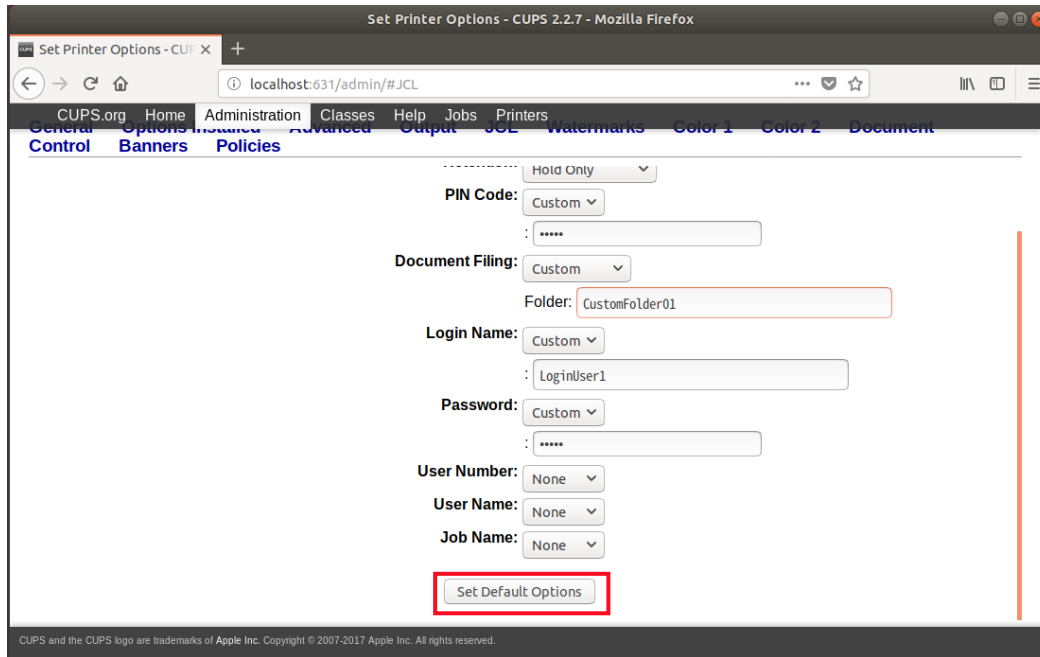


6. Set any value from the drop-down menu for each setting item

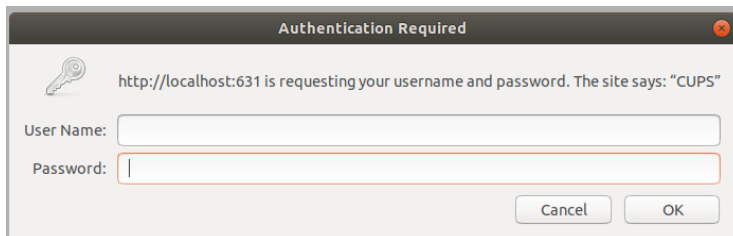
When "Custom" is selected, an edit box to enter any custom value will be displayed.



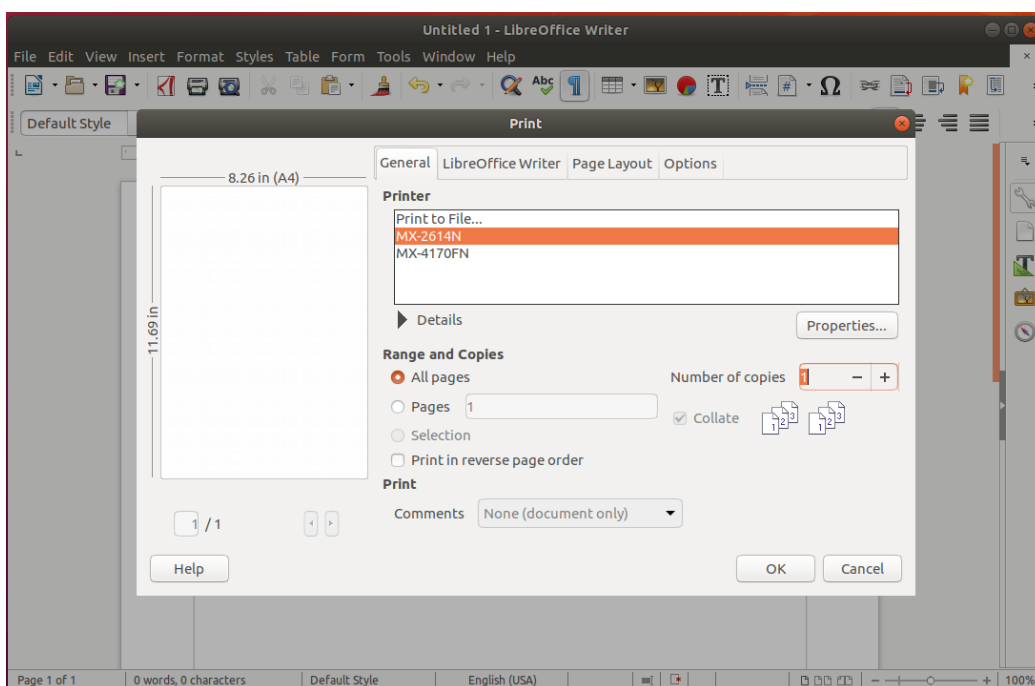
7. Click "Set Default Options" to save the settings.



8. The dialog for authentication will be displayed. Enter User Name and Password for the administrator.



9. Select Print menu from the application, select the printer from the Print dialog, and then click OK (or Print) button (note: no need to change printer properties of Job Handling)



[Note]

When using this workaround, there are the following restrictions.

- One printer driver can only have one user information (Login Name / Password / User Number).

For this reason, please use the following method when using with multiple users.

1. Install the printer driver for each user
2. Save user information (Login Name / Password / User Number) to each printer driver
3. Each user uses their own printer driver

However, in this case, the printer drivers of other users are displayed on each user. As a workaround, by using the "Set Allowed Users" function, only the driver for each user is displayed.

